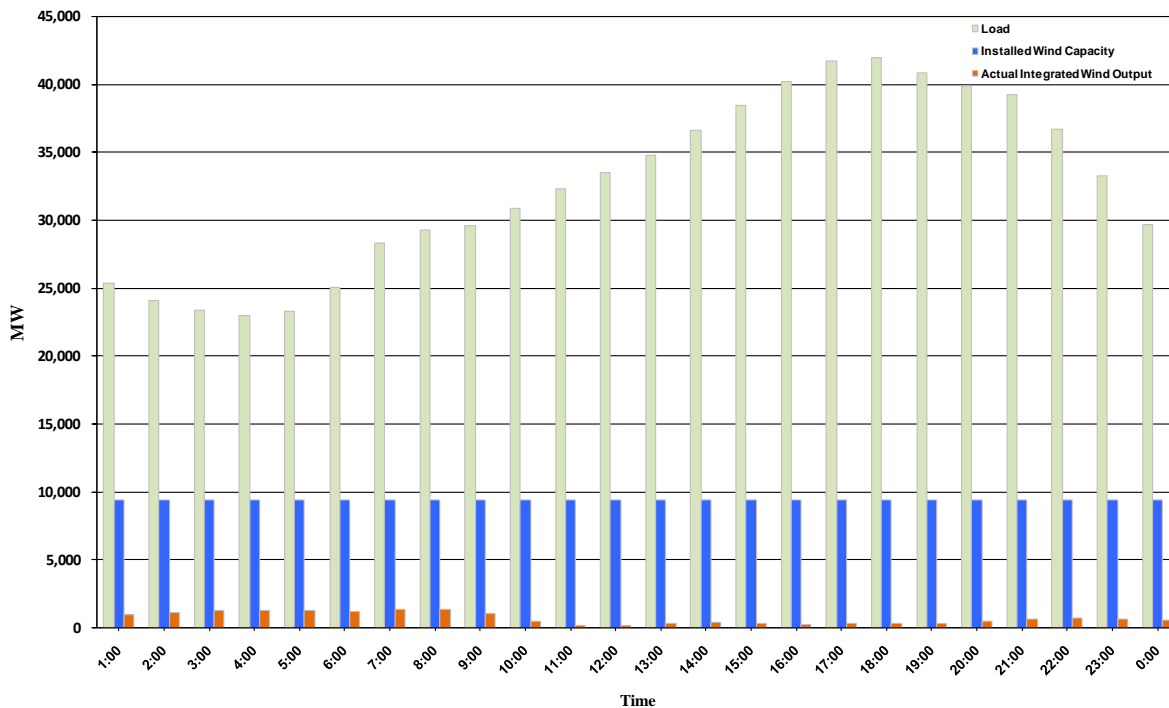




ERCOT Grid Operations Wind Penetration Report: 09/28/10

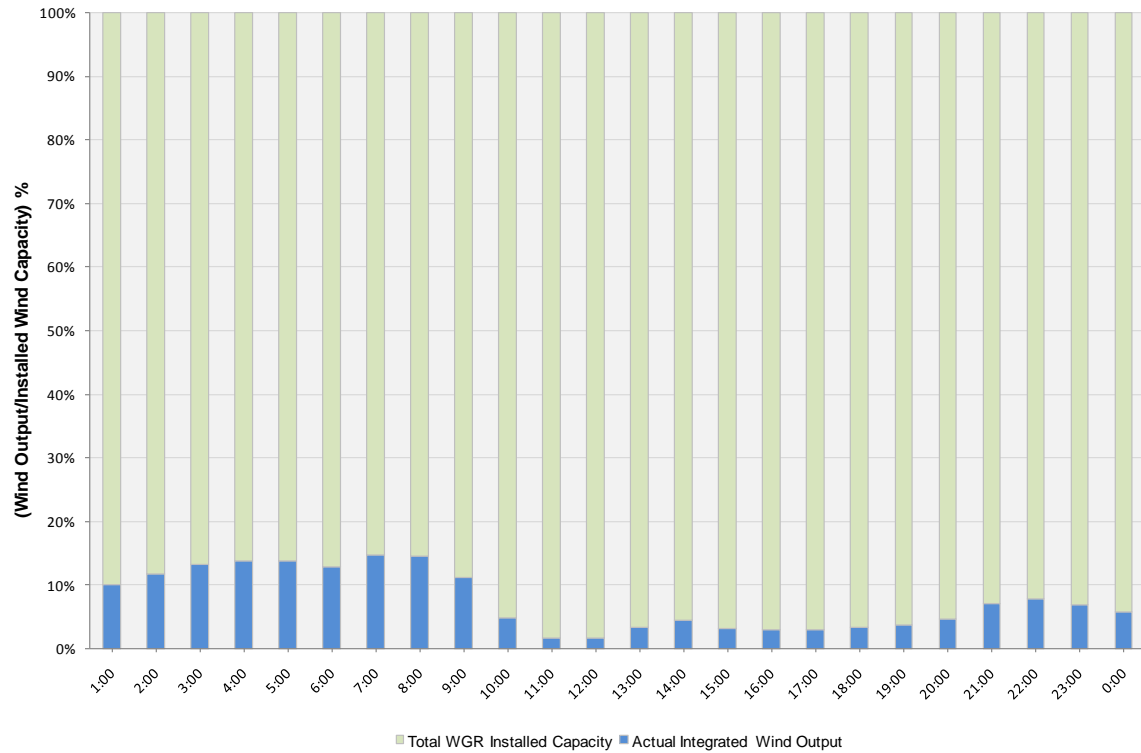
Peak Load	41,987 MW
Load Peak Hour	18
Wind Record 06/12/10	7016 MW
Max Wind value	1441 MW
Wind Peak Hour	06:43:16
Wind Penetration %	4.95

Hourly Average Actual Load vs. Actual Wind Output
09-28-2010

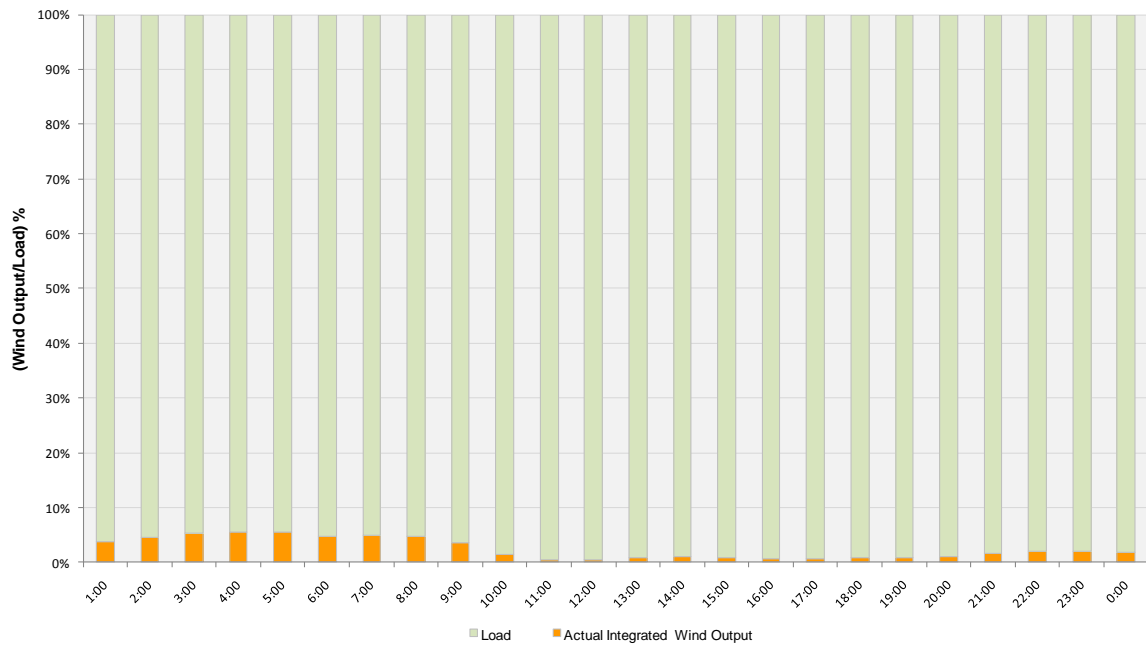




Actual Wind Output as a Percentage of the Total Installed Wind Capacity
09-28-2010



Actual Wind Output as a Percentage of the ERCOT Load
09-28-2010





ERCOT Load vs. Actual Wind Output 09/21/10 - 09/28/10

